

GAIN CONFERENCE 2010

30th June



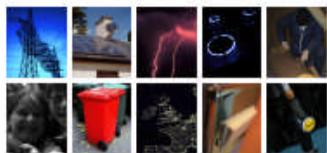
HOW LOCAL AUTHORITIES WORK TO INSTALL RENEWABLES

Presented by Andy Stephenson, Chair, Carbon Action Network (Durham County Council)



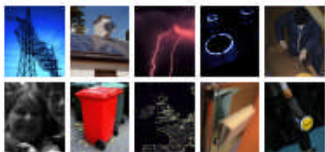
What is The Carbon Action Network?

- Formally known as UK HECA, it was set up in 1998 to facilitate the implementation of the Home Energy Conservation Act 1995.
- Changed to UKCAN in 2009 to deal with local, regional, national and international initiatives.

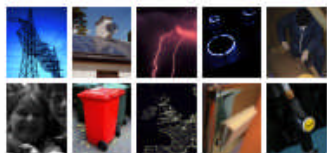


What do we do?

- To provide a network for sharing information and best practice across the English and Devolved regions.
- Promote the activities and work of those within the domestic energy field.
- Take members views forward in consultations and events with national and Regional Bodies,
- Ensure continual awareness raising and promote events and seminars

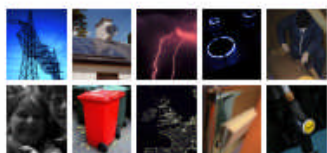


Family Tree



Membership

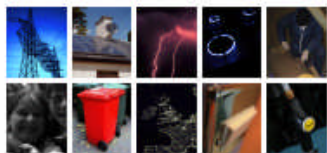
- Local Authorities,
- Installers,
- Utility companies
- Energy Savings Trust
- Housing Associations
- Other 3rd parties engaged in domestic carbon reduction



What we are about

- Action
- Network

Can

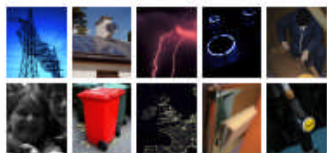


Carbon Action Network
reducing carbon emissions and fuel poverty



Challenges

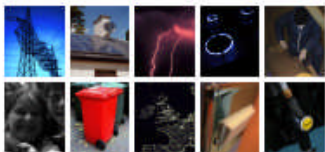
- Funding streams and mechanisms
- Planning systems and guidance – e.g. Merton Rule
- Code for Sustainable Homes and Zero Carbon Housing
- HECA
- National Indicators
- Covenant of Mayors
- Increasing Fuel Prices
- Fuel Poverty
- Existing Housing



Challenges

National Indicators

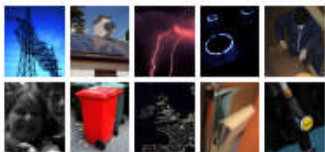
- NI186 – Carbon reduction per capita across the administrative Area
- NI187 – Fuel Poverty Indicator
- NI188 – Adaptation to Climate Change



What are Councils Doing?

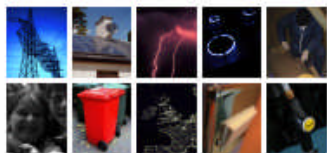
Councils already proactive, Schemes include:

- Micro-Renewables,
- Cavity Wall and Loft Insulation programmes,
- Awareness Raising Campaigns,
- Alleviating Fuel Poverty,
- raising funding through programmes and partnerships
- Many More



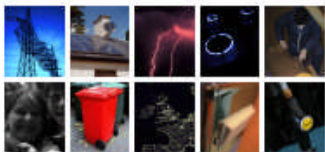
Partnership Working

- Key issue – particularly in current climate
- EAGA good example – warm Front teams attend Regional CAN meetings
- Warm Front – CAN working group
- Partnership development – Salford SHIP scheme



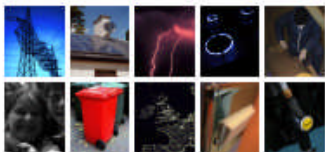
Partnership Working cont.

- North East Fuel Poverty Declaration
- Partnership between CANNE and NEA
- Public Health Support
- Task and Finish group generated an Action plan
- Action planning group has various members inc EAGA, NEA, Public Health, EST



Any Questions?

Can



Carbon Action Network
reducing carbon emissions and fuel poverty.

